

The Princess & the Pea



The Princess & the Pea - full size painted scrim of pea vines and butterflies
(Jester down stage in spotlight gives indication of size)

The Princess & the Pea Sets

Designed by scenic artist Michael Anania

(Royalty fee negotiation with Mr. Anania responsibility of renting company)

For information regarding the original choreography for the ballet

The Princess & the Pea please contact Daniel Pelzig

DPZ@aol.com

For more information about The Princess & the Pea set rental
contact

Production Manager Josh Neckels at 541 485 3992.

josh@eugeneballet.org



The princess's bed: free standing unit with castors, and ladder.



The Forest: 6 “trees” units on castors with hidden door
Sun, up-stage small perspective castle, downstage castle cut-out border



3 windows: 3 separate metal frames with gold paint



Throne - free standing unit on castors



Ribbon Drop in front of cyclorama with torchieres



PRINCESS

Cream bodice and
tiered skirt over tutu
net skirt with gold trim
Flowered headdress

PRINCE

Purple tunic with gold
trim
Cream shirt with soft
sleeves



PRINCESS

Empire line white night
dress-thigh length



PRINCESS PEASANT COSTUME:

Skirt- yellow and pink tiered silk dupioni with striped silk & checked borders

Blouses - cream crystal short sleeve

Corset - green silk pea pod bodice

1 headpiece - floral cone, 1 set of flowers combs & extra flowers

PRINCE COSTUME: tunic - white with gold & white sleeves



JESTER

1 tunic - multi fabric with large collar

1 set of Lycra under-sleeves

1 hat - red & black jester hat

tights - party colored

1 pouch - green & red metallic (*snap*s to tunic)



QUEEN

1 dress - purple lace dress w attached purple & pink petticoat with jewelled CF

1 wig - white "Marie Antoinette" wig with attached 3 masted schooner

Costume 2
(*Not shown*)

1 nightgown - blue striped seersucker

1 cap - white mobcap with blue bow + 1 extra

KING

1 fat pad

1 tie - striped

2 pairs of socks - purple/pink striped (above the knee)

1 sash elaborately trimmed sash with ROI emblem

1 wig - white 18th century crystal sheer wig with attached sail boat



KING

1 nightshirt - white

1 cap - cream cotton Lycra
nightcap



FORESTER WOMEN (3)

3 skirts - 2 tiered silk dupioni skirt w. checked borders (skirt colors - purple/blue, green/purple, blue/green)

3 bodices - crystal sheer bodice

3 headpieces - floral wreaths - 1 with red ribbon crown

FORESTER MEN (3)

2 vests - patchwork leather

3 shirts - cream poly

3 pairs of knickers - jumbo spandex in purple or blue or green with leaf motif on side

2 belts - jumbo spandex belt with leaf motif in coordinating colors

6 pairs of knee highs yellow with blue checks for blue pants yellow with green stripes for green pants yellow with purple checks for purple pants

1 hat for Purple Forester yellow & green with small brim

1 hat for Green Forester blue felt with brim



COURT LADIES

3 dresses - green ankle length lace & net skirt with gold do net panniers & bows with attached green panne velvet bodice with lace sleeves

3 petticoats - crystal sheer (matches trim color)

3 headpieces - feather & flowers on comb

6 dresses - white knee length net & lace skirt with colored crystal sheer petticoat (3 petticoats are shared with green court, 3 are attached) & attached gold do net panniers with bows & attached white & gold brocade with lace and net sleeves

6 headpieces - feather & flower comb in coordinating colors

COURT MEN (6)

6 tunics - varying green panne velvet with darker green brocade inserts & blue green trim & ribbons at shoulder

6 sets of under-sleeves - Lycra under-sleeves with panne & brocade sleeves





3 SERVANT WOMEN

3 skirts - white ankle length lace & net skirt
 3 bodices - gold brocade bodice with lace sleeves
 3 aprons - blue & white stripe
 3 caps - blue & white stripe
 1 extra skirt base

3 SERVANT MEN

3 Tunics - blue & cream stripe



MATTRESSES (6)

- 1 peach check front with teal back
- 1 green stripe front with pink back
- 1 blue zigzag front with yellow back
- 1 gold check front with blue back
- 1 teal diamond front with pink back
- 1 pink diamond front with green back

All with gold Lurex fringe at wrists & ankles

6 caps - cream cotton Lycra nightcap with cream tassel

MATTRESSES (6)

- 1 teal striped front with peach back
- 1 pink stripe front with green back
- 1 blue stripe front with yellow back
- 1 peach zigzag front with teal back
- 1 gold diamond front with pink back
- 1 green zigzag front with pink back

all have gold Lurex fringe at wrists & ankles

6 caps - cream cotton Lycra nightcaps with cream tassels



PRINCESS INDIA

Purple robe with
embroidered green diamond
sleeves and lame trim

1 belt; 1 necklace - gold
chain

1 headpiece - green
embroidered cone with
purple & feathers green veil

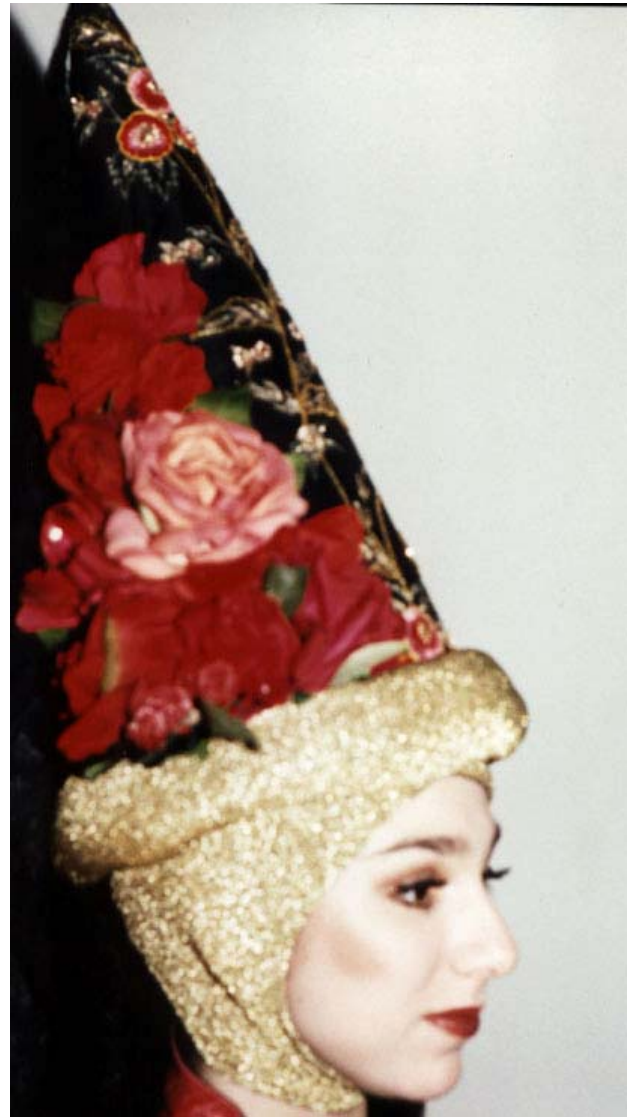


PRINCESS RUSSIA

Burgundy robe with gold embroidered sleeves & lame trim

1 belt with gold finding

1 headpiece - gold & black cone with jewels & red metallic veil



PRINCESS SPAIN

Pink robe with black embroidered sleeves & lame trim

1 belt - black embroidered with roses

1 headpiece - black embroidered cone with black lace veil



PRINCESS SCANDINAVIA

Light blue robe with tulip
print pink lame sleeves &
lame trim

1 belt - pink with red heart in
front

1 headpiece pink lame cone
with yellow braids & pink veil



PRINCESS AFRICA

Teal robe with leopard print sleeves
& gold lame trim

1 belt

1 headpiece - leopard cone with
orange metallic veil



PRINCESS AFRICA

Headpiece - leopard cone with orange metallic veil

THE PRINCESS & THE PEA COSTUME INVENTORY

59 costumes

THE PRINCESS (4)

#1

- 2 skirts- yellow and pink tiered silk dupioni with striped silk & checked borders
- 2 blouses - cream crystal short sleeve
- 1 corset - green silk pea pod bodice
- 1 headpiece - floral cone
- 1 set of flowers combs & extra flowers
- 1 rehearsal cone

#2

- 1 night gown - pink floral cotton
- 1 cap - white mobcap w. pink bow + 1 extra
- 1 rehearsal nightgown

#3

- 2 nightgowns- short with white/gold/silver chiffon

#4

- 1 skirt - white & gold net, 2 tiered skirt
- 1 bodice - white & gold
- 1 set of gold arm puffs

PRINCE (2)

#1

- 1 tunic - purple & gold
- 2 shirts - cream ply shirt with lace collar
- 1 pair of knickers - cream Lycra striped (worn with both costumes)

#2

- 1 tunic - white with gold & white sleeves

JESTER (1)

- 1 tunic - multi fabric with large collar
- 1 set of Lycra under-sleeves
- 4 pairs of tights - party colored
- 1 pouch - green & red metallic (snaps to tunic)

KING (2)

- 1 fat pad
- 1 tie - striped
- 2 pairs of socks - purple/pink striped (above the knee)
- 1 sash elaborately trimmed sash with ROI emblem
- 1 wig - white 18th century crystal sheer wig with attached sail boat
- 1 nightshirt - white
- 1 cap - cream cotton Lycra nightcap

QUEEN (2)

#1

1 dress - purple lace dress w attached purple & pink petticoat with jewelled CF

1 wig - white "Marie Antoinette" wig with attached 3 masted schooner

1 lorgnette

#2

1 nightgown - blue striped seersucker

1 cap - white mobcap with blue bow + 1 extra

FORESTER WOMEN (3)

3 skirts - 2 tiered silk dupioni skirts w. checked borders (skirt colors - purple/blue, green/purple, blue/green)

3 bodices - crystal sheer bodice

3 headpieces - floral wreaths 1 with red ribbon crown

FORESTER MEN (3)

2 vests - patchwork leather

3 shirts - cream poly

3 pairs of knickers - jumbo spandex in purple or blue or green with leaf motif on side

2 belts - jumbo spandex belt with leaf motif in coordinating colors

6 pairs of knee highs yellow with blue checks for blue pants
 yellow with green stripes for green pants
 yellow with purple checks for purple pants

1 hat for Purple Forester yellow & green with small brim

1 hat for Green Forester blue felt with brim

GREEN COURT LADIES (3)

3 dresses - green ankle length lace & net skirt with gold do net panniers & bows with attached green panne velvet bodice with lace sleeves

3 petticoats - crystal sheer (matches trim color)

3 headpieces - feather & flowers on comb

WHITE COURT LADIES (6)

6 dresses (7 bodices & 6 skirts) - white knee length net & lace skirt with colored crystal sheer petticoat (3 petticoats are shared with green court, 3 are attached) & attached gold do net panniers with bows & attached white & gold brocade with lace and net sleeves

6 headpieces - feather & flower comb in coordinating colors

COURT MEN (6)

6 tunics - varying green panne velvet with darker green brocade inserts & blue green trim & ribbons at shoulder

6 sets of under-sleeves - Lycra under-sleeves with panne & brocade sleeves

SERVANT WOMEN (3)

3 skirts - white ankle length lace & net skirt
3 bodices - gold brocade bodice with lace sleeves
3 aprons - blue & white stripe
3 caps - blue & white stripe
1 extra skirt base

SERVANT MEN (3)

3 Tunics - blue & cream stripe

MATTRESSES (6)

1 teal striped front with peach back
1 pink stripe front with green back
1 blue stripe front with yellow back
1 peach zigzag front with teal back
1 gold diamond front with pink back
1 green zigzag front with pink back
all have gold Lurex fringe at wrists & ankles
6 caps - cream cotton Lycra nightcaps with cream tassels
3 mockup mattresses

MATTRESSES (6)

1 peach check front with teal back
1 green stripe front with pink back
1 blue zigzag front with yellow back
1 gold check front with blue back (missing?)
1 teal diamond front with pink back
1 pink diamond front with green back
All with gold Lurex fringe at wrists & ankles
6 caps - cream cotton Lycra nightcap with cream tassel

PRINCESSES (9)

Princess Africa - teal robe with leopard print sleeves & gold lame trim

1 belt; 1 headpiece - leopard cone with orange metallic veil

Princess Latin America - orange robe with multi-metallic stripe sleeves & gold lame trim

1 belt with attached grapes; 1 headpiece - fruit cone with purple veil

(Not shown)

Princess China - yellow robe with red & gold sleeves & gold lame trim

1 belt - Obi; 1 headpiece - red & gold with Pagoda cone with red veil

3 pairs of gloves - green long fingerless

(Not shown)

Princess India - purple robe with embroidered green diamond sleeves and lame trim
1 belt; 1 necklace - gold chain
1 headpiece - green embroidered cone with purple & feathers green veil

Princess Scotland - green robe with green/red plaid sleeves & lame trim
1 belt with attached sporran
1 headpiece - green plaid cone with bird side front and burgundy veil
(Not shown)

Princess Russia - burgundy robe with gold embroidered sleeves & lame trim
1 belt with gold finding; 1 headpiece - gold & black cone with jewels & red metallic veil

Princess Scandinavia - light blue robe with tulip print pink lame sleeves & lame trim
1 belt - pink with red heart in front; 1 headpiece pink lame cone with yellow braids & pink veil

Princess Great Britain - red robe with red/black/blue stripe sleeves with lame trim
1 belt; 1 headpiece - red cone with red tulle brush on top & red/white/blue veil
(Not shown)

Princess Spain - pink robe with black embroidered sleeves & lame trim
1 belt - black embroidered with roses; 1 headpiece - black embroidered cone with black lace veil

